

HUSENS FASADER

MOT NORR



HUS 3

HUS 2

HUS 1

LÄGENHETERNAS PLACERING I VÅNINGSPLANEN

Typ	1	2	3	3a	4	5	6	7
Vån.	LÄGENHETSPLACERING							
8								
7								
6								
5								
4								
3								
2								
1								
E								

1	2	3	3a	4	5	6	7
LÄGENHETSPLACERING							

1	2	3	3a	4	5	6	7
LÄGENHETSPLACERING							

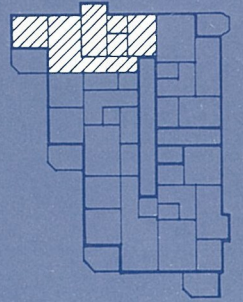
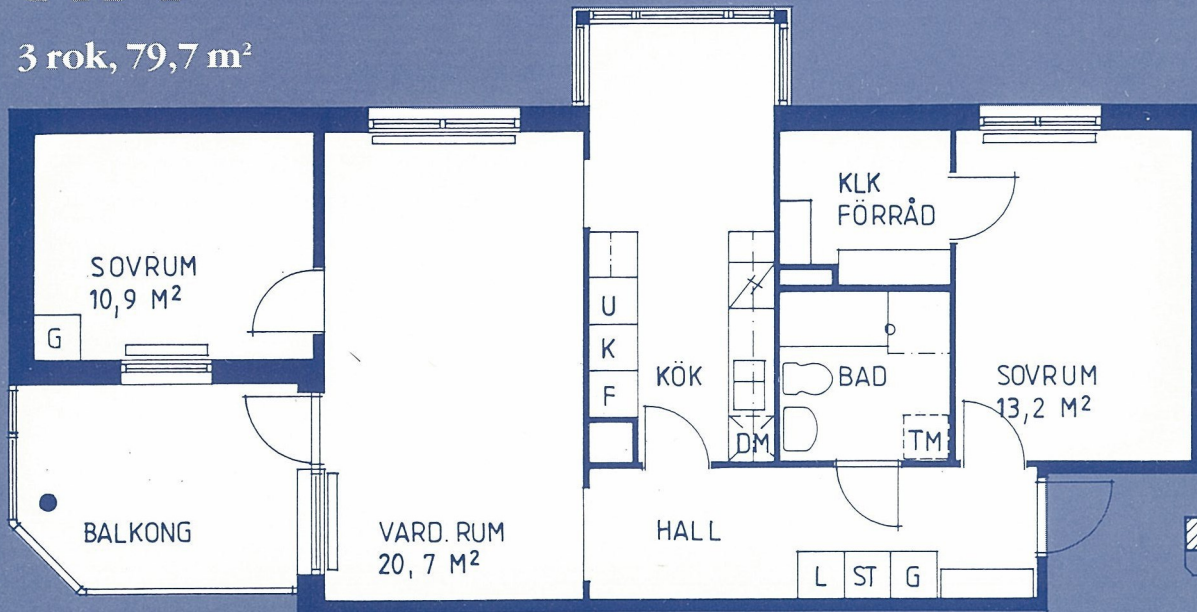
■ = Lägenhet finns i planet
□ = Lägenhet finns ej i planet

HUS 3

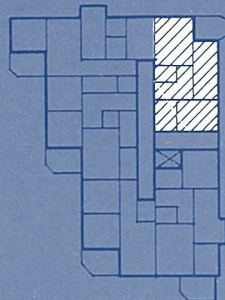
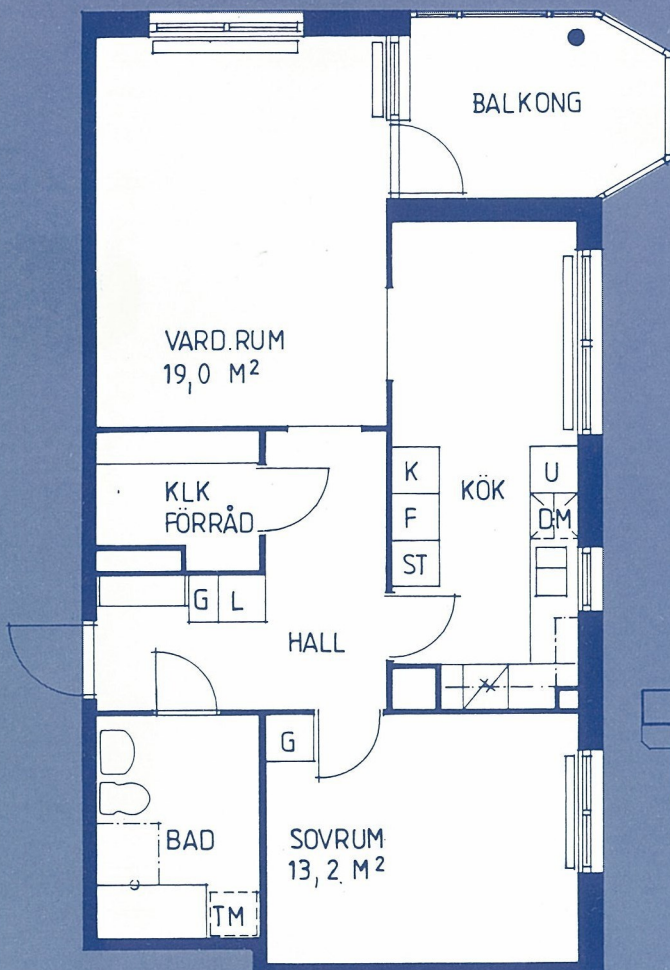
HUS 2

HUS 1

TYP 1

3 rok, 79,7 m²

TYP 2

2 rok, 67,7 m²

FÖRKLARINGAR

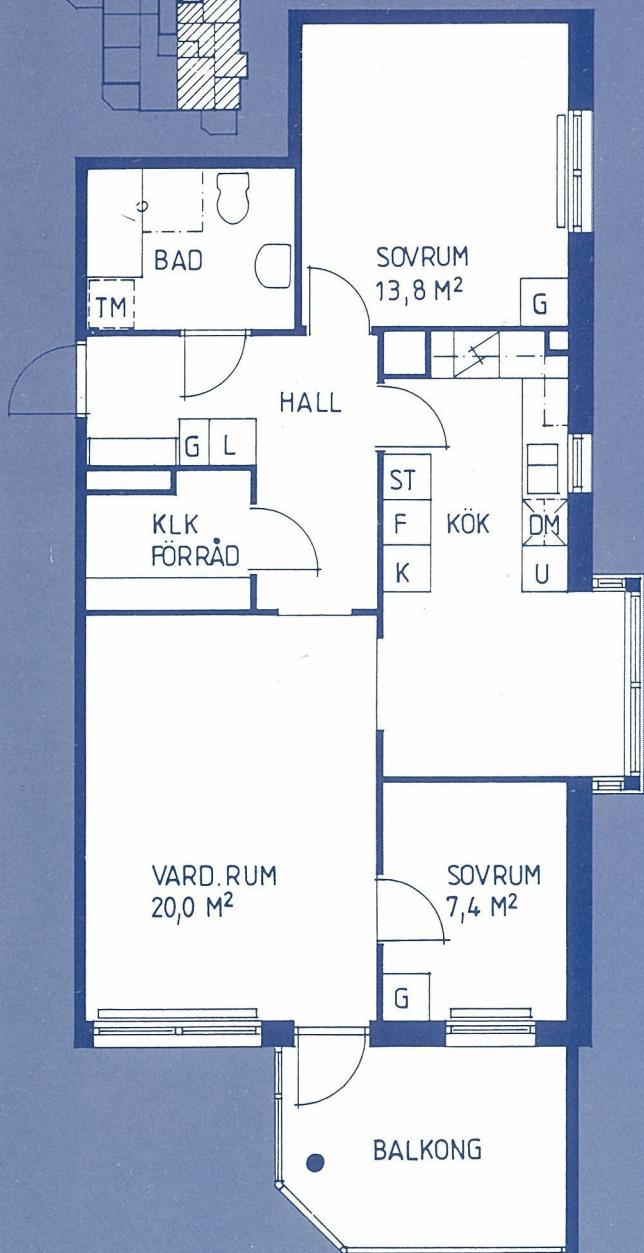
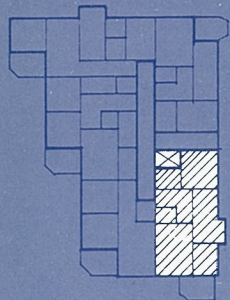
- G GARDEROB
- L LINNESKÅP
- ST STÄDSKÅP
- F FRYSSKÅP
- K KYLSKÅP
- U UGN
- ☒ SPIS
- DISKBÄNK
- DM PLATS FÖR DISKMASKIN
- TM PLATS FÖR TVÄTTMASKIN
- GRÄNS FÖR PARKETTGOLV



1 cm = 1 m

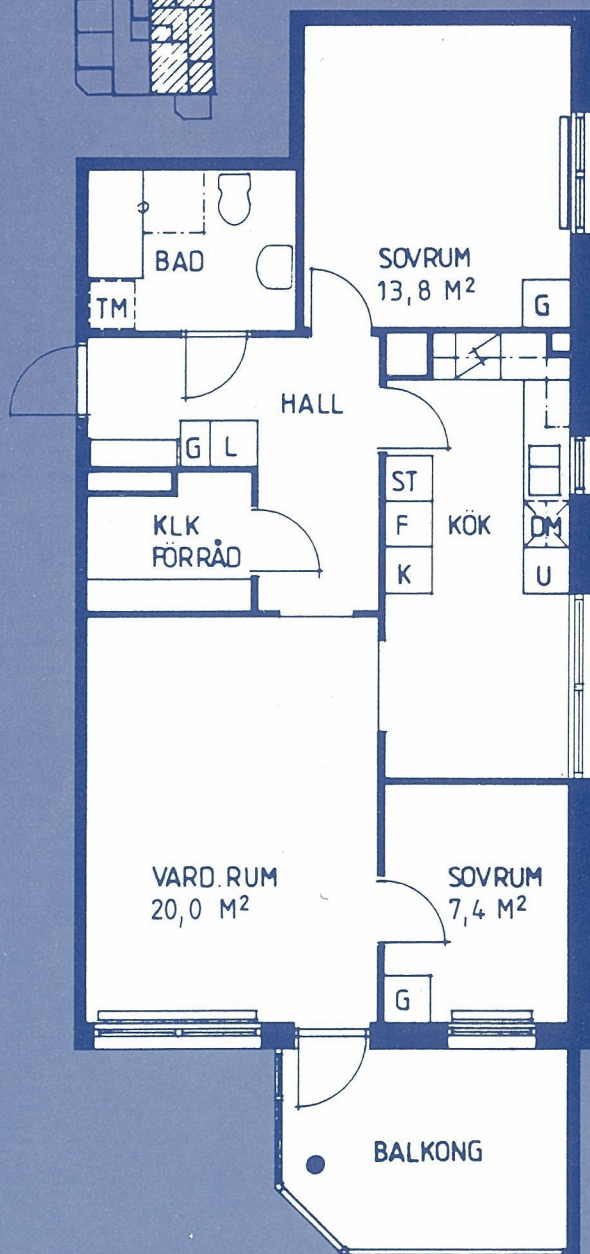
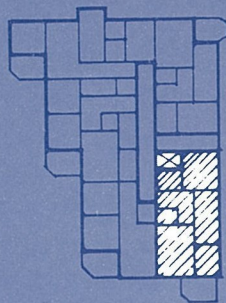
TYP 3

2 1/2 rok, 77 m²



TYP 3A

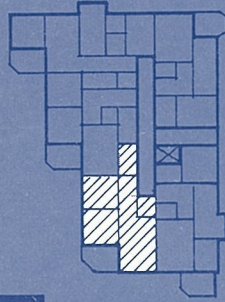
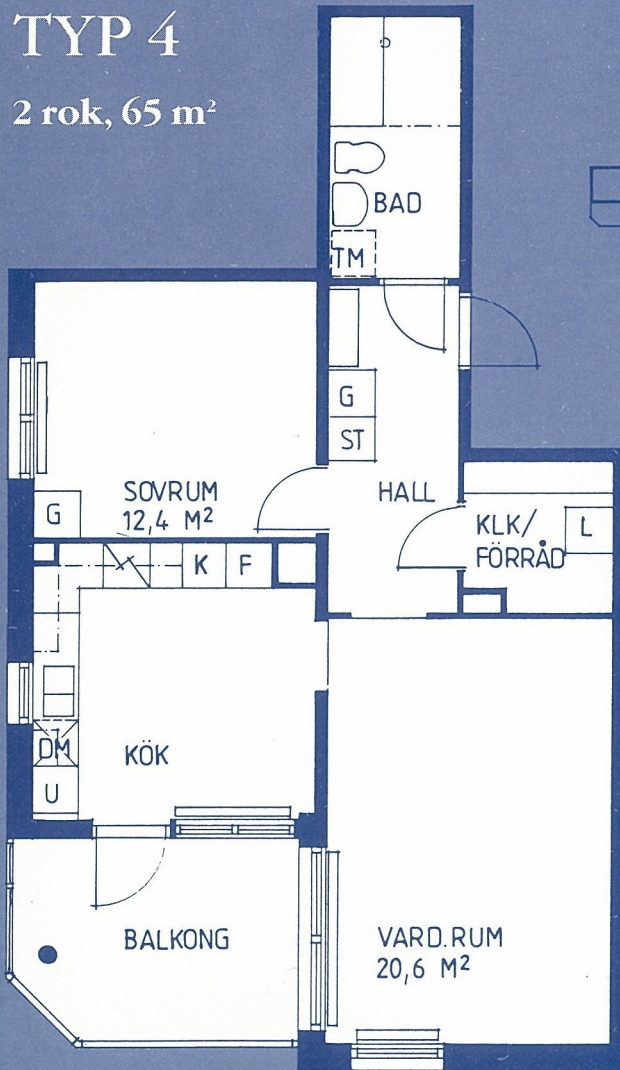
2 1/2 rok, 75,2 m²



1 cm = 1 m

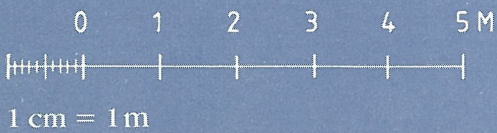
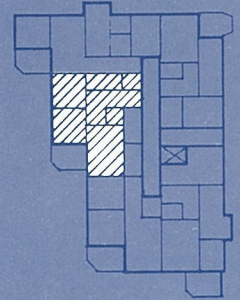
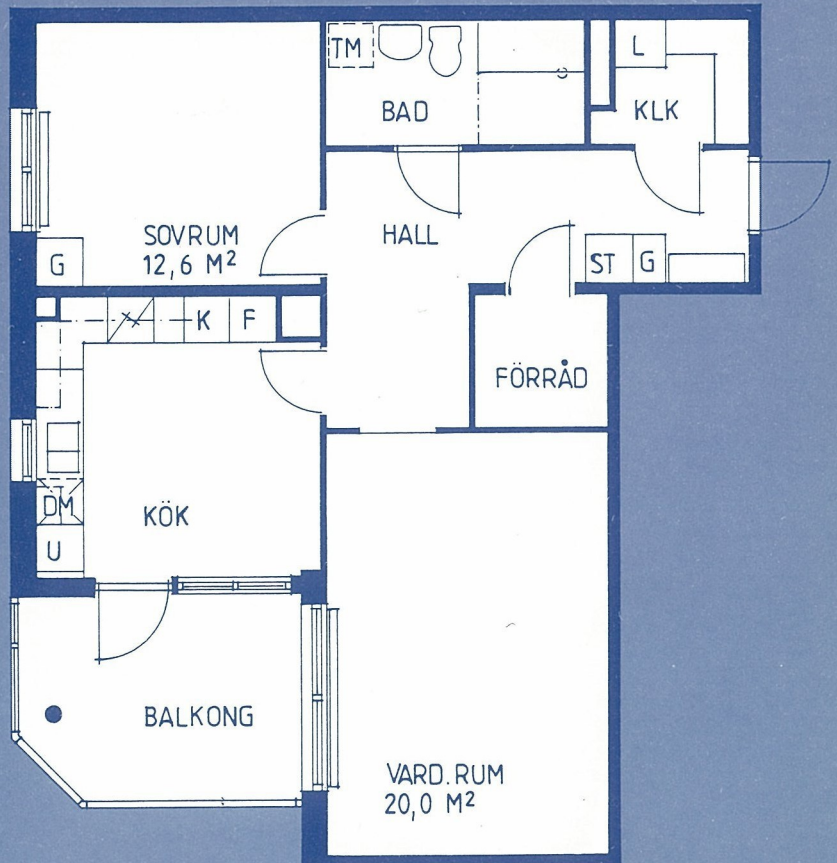
TYP 4

2 rok, 65 m²



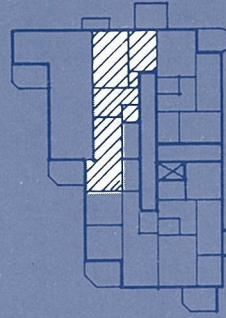
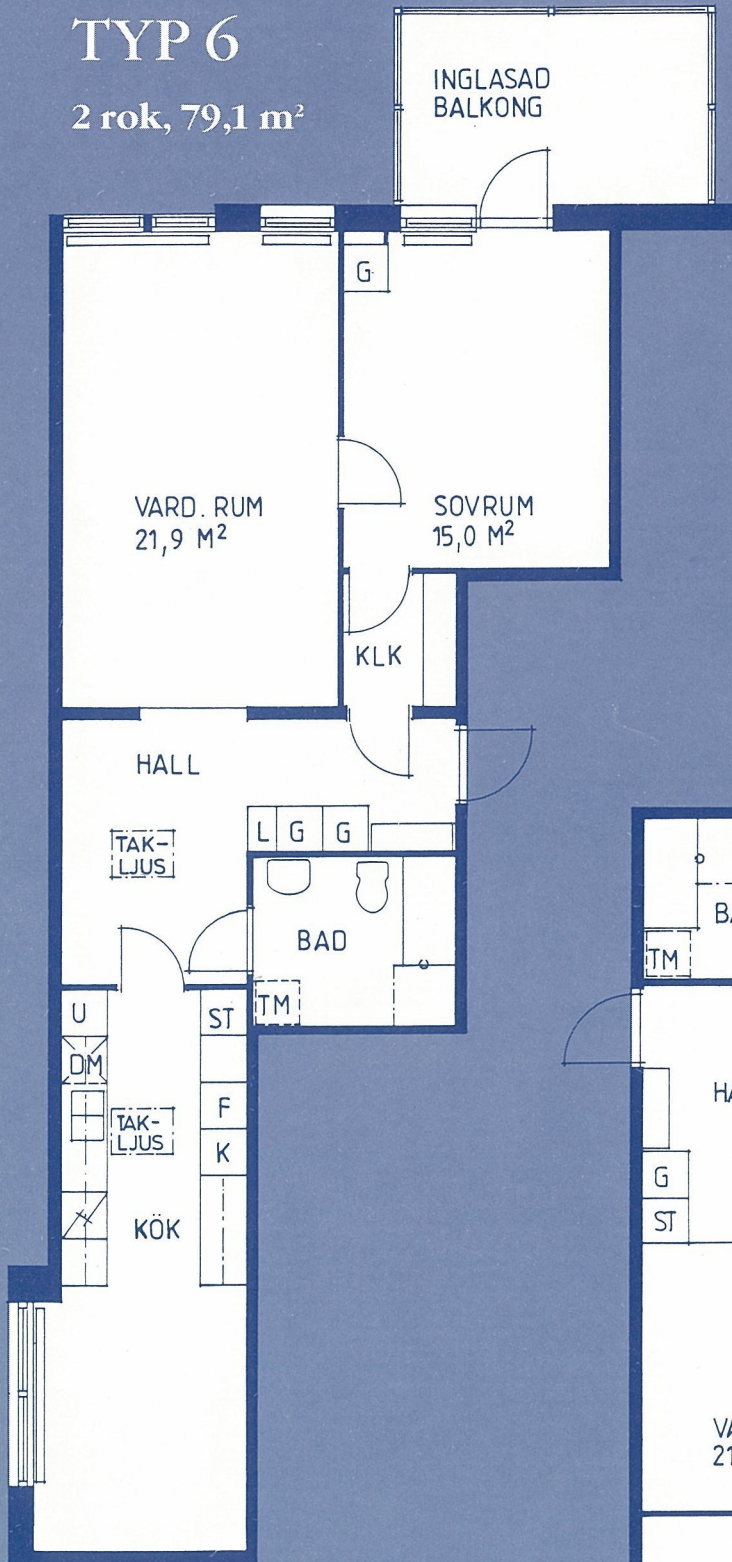
TYP 5

2 rok, 72 m²



TYP 6

2 rok, 79,1 m²



TYP 7

2 1/2 rok, 75,8 m²

